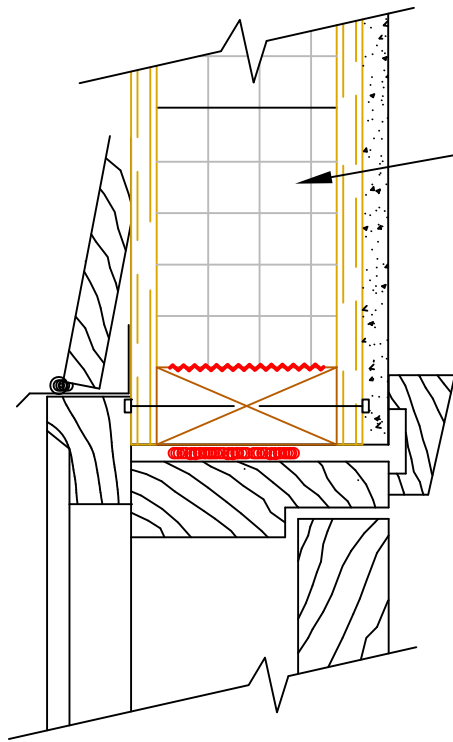
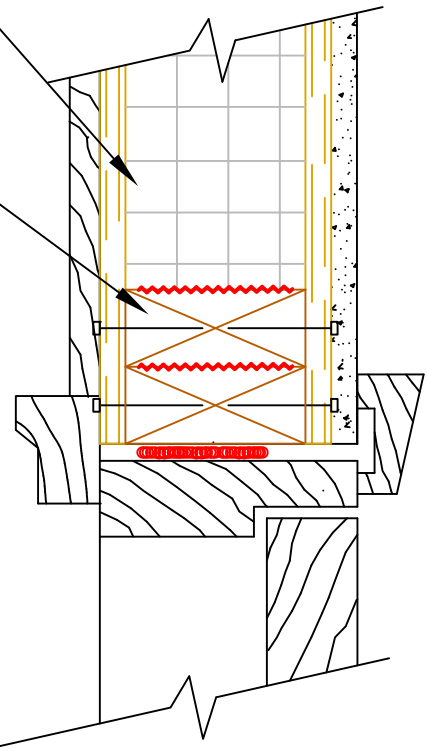


Note: Wall covering & water resistive barrier and flashing as req'd by code.

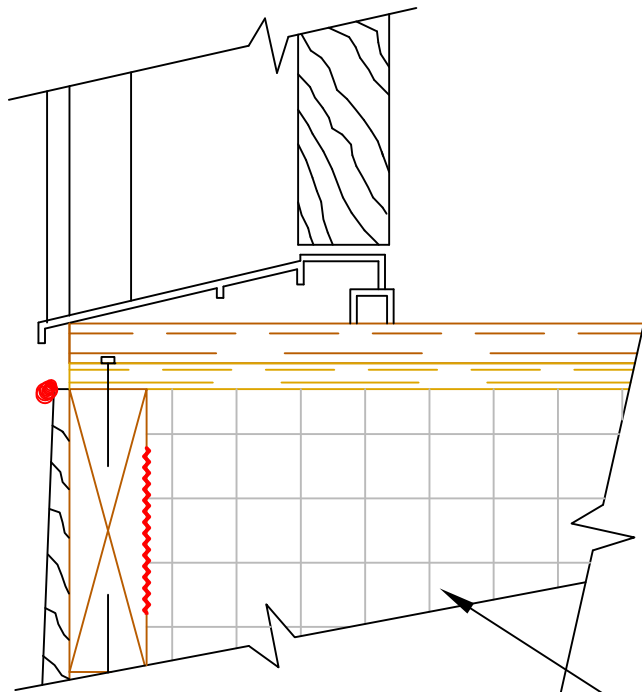


Typical Head Detail

Optional 2X for additional hinge & strike plate support.



Typical Jamb Detail (plan)



Typical Exterior Sill Detail

Note: Refer to SIP-116 for notes and detail information.

R-Control SIP.

SECTION

Scale: NTS

Updated 3-26-12

R-Control® SIP

TITLE:
Doors

NO.
SIP-117